

THE PARKING AUTHORITY OF TORONTO ANNUAL REPORT 1968





CITY COUNCIL

MAYOR

William Dennison

CONTROLLERS

Mrs. Margaret Campbell, Q.C., B.A.
Mrs. June Marks
Frederick J. Beavis
Allan A. Lamport

ALDERMEN

Oscar T. Sigsworth
Joseph J. Piccininni
B. Michael Grayson, Q.C., B.A.
Mrs. Helen M. Johnston
David Rotenberg, B.A.
Charles L. Caccia, B.Sc.
Horace Brown
Monte H. Harris, B.P.H.E., B.A.
Anthony O'Donohue, P. Eng.
Harold Menzies
Hugh J. Bruce, Q.C., B.A.
Ken Dear
Mrs. Mary Temple
Ben Grys
Thomas A. Wardle
Mrs. Alice Summerville
Paul B. Pickett, B.A.
Richard R. Horkins, B.A.



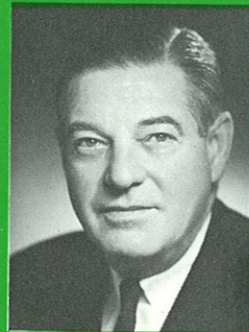
THE PARKING AUTHORITY OF TORONTO



HUGH C. ELSAM, Commissioner



WILLIAM D. KEARNS, Commissioner

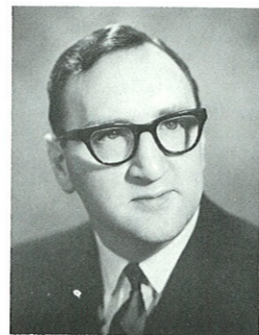


JOHN F. ELLIS, M.B.E., Chairman



ROBERT G. BUNDY, B.Com.,
General Manager

Members of The Parking Authority are appointed by, and are responsible to the City Council. Commissioners must be taxpayers of the City of Toronto.



REGINALD W. LEWIS, C.G.A., F.C.I.S.,
Secretary-Treasurer

ANNUAL REPORT 1968

His Worship Mayor William Dennison,
Members of the Board of Control,
City Hall,
Toronto 1, Ontario.

Your Worship, Ladies and Gentlemen:

In accordance with the provisions of THE CITY OF TORONTO ACT, 1952 establishing your Parking Authority, we are pleased to submit our annual report for 1968.

During the year under review municipal off-street parking spaces increased to 14,440 and a new record of 6,450,000 parkers served was established.

In conjunction with the opening of the east-west subway extension, five commuter lots, containing 2,848 spaces, were opened along the route of the subway thereby enabling people to park and proceed to their destinations on the Rapid Transit Subway.

Municipal taxes of \$975,000 were paid to the City and the policy of meeting additional capital expenses out of revenues was continued.

Development of plans for future parking provisions were proceeded with according to the long-term programme for permanent municipal carparks.

Your Authority appreciates the cooperation and helpful advice it has received from your Board, City Council and civic officials, without which it would be impossible to make the necessary provisions for much needed parking facilities.

Yours very truly,

John F. Ellis,
Chairman.



ANNUAL REPORT 1968

The parking Authority is a corporate body established by Provincial Statute and City By-Law in 1952, and comprised of three resident taxpayers appointed by and responsible to City Council. It is a public utility, required to be self-sustaining, that is responsible for the establishment, operation and management of municipal parking facilities throughout the City of Toronto.

OBJECTIVES:

To provide a low-cost, high-quality parking service to the motoring citizenry;

To establish an efficient system of municipal carparks in all sectors of the City (this involves short-term garages and lots in the downtown and midtown areas, surface lots strategically located on the periphery of the downtown area for long-term parkers, long-term carparks at subway termini and on the downtown fringe at expressway points, and neighborhood lots for shoppers and residents);

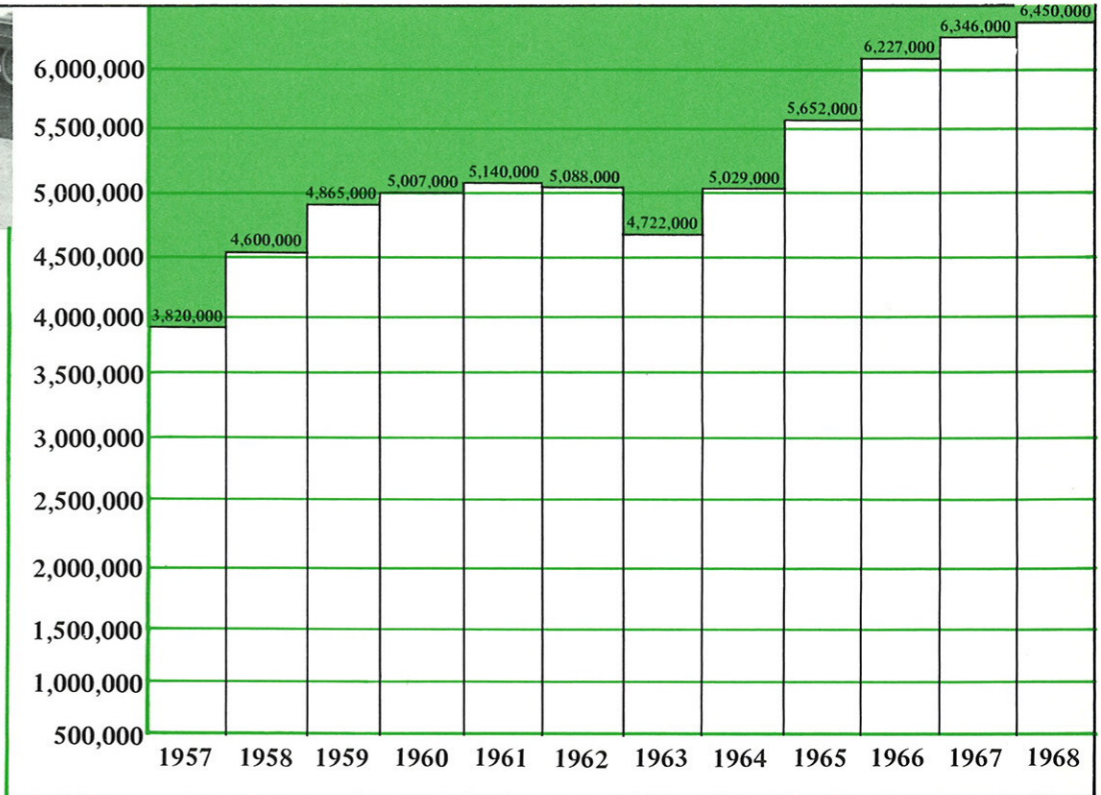
To develop a network of carparks commensurate with the increasing needs of Toronto and, in accordance with sound business practice, to provide service and facilities that are economic.

To contribute, by planned and systematic development of its operations, an improved transportation fabric for the community as a whole, clearing the streets for the benefit of public transit and the movement of traffic instead of the storage of vehicles.

CUSTOMERS SERVED 1968



The Authority parked 6,450,000 vehicles at unmetered off-street parking facilities in the City of Toronto.

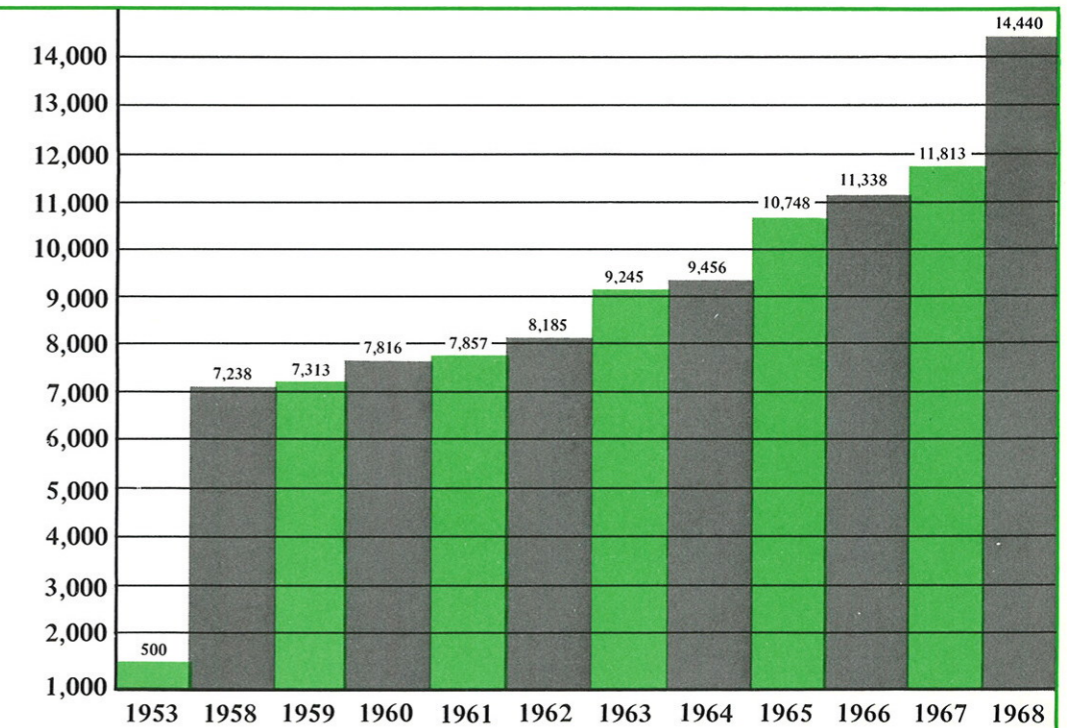


SPACES AVAILABLE AS OF DECEMBER 31st, 1968



At December 31st, 1968, 14,440 spaces in operation, located

in downtown garages	3,165	22%
on downtown surface carparks	427	3%
on downtown peripheral carparks	2,273	16%
on uptown surface carparks	1,594	11%
on neighbourhood commercial carparks	3,883	27%
on subway commuter carparks	3,098	21%





THE PARKING AUTHORITY OF TORONTO BALANCE SHEET as at December 31, 1968

ASSETS

Current Assets:

Cash in bank and on hand including Term Deposits	\$2,685,873		
Accrued Interest	30,622	\$ 2,716,495	
Accounts Receivable:			
City of Toronto	\$ 44,563		
Other	65,925	110,488	
Prepaid Expense		14,529	
Inventories		20,060	
			\$ 2,861,572

***Fixed Assets:**

Car Parks — Lands and improvements Completed Projects		\$11,434,995	
Projects under construction			
Surface Car Parks	\$4,011,865		
Parking Garages	2,425,818	6,437,683	
Renovations to Office Premises and Furniture, Fixtures and Equipment		363,304	18,235,982
Proceeds from sale of debentures held by the City for uncompleted projects		\$ 223,173	
Proceeds from sale of Property held by the City		35,490	258,663

Note 1.* The Parking Authority does not hold title to the lands or improvements thereon. They are included here by reason of having been designated for the use of the Authority.

\$21,356,217

LIABILITIES

Current Liabilities:

Accounts Payable			
City of Toronto	\$ 8,648		
Other	131,221	\$ 139,869	
Payroll Accrued		28,119	
Deferred Revenue		4,351	
Parking Stamps sold but not redeemed		10,646	182,985

Sick Credit Reserve:

79,517

Reserve to meet Debt Charges:

41,358

Current Surplus:

Balance December 31, 1967		\$ 1,472,113	
Add: Profit for year 1968 after provision for Capital acquisitions and Debt Charges ..		1,085,599	2,557,712
			\$ 2,861,572

Capital Liabilities:

City of Toronto			
For funds advanced by the City for capital expenditures pending the issue of debentures			2,855,264
Debenture Debt:			
Issued		\$11,188,593	
Less: Redeemed to December 31, 1968	\$ 911,313		
Sinking Fund Investment as at December 31, 1968	3,125,312	4,036,625	7,151,968
Capital Surplus:			8,487,413

Note 2. Contingent Liability \$81,000

\$21,356,217

AUDITOR'S OPINION

I have examined the Balance Sheet of the Parking Authority of Toronto as at December 31, 1968 and the Statement of Revenue and Expenditure for the year ended on that date, and have obtained all the information and explanations I have required. My examination included a general review of the accounting procedures and such

tests of accounting records and other supporting evidence as I considered necessary in the circumstances.

In my opinion, the accompanying Balance Sheet and Statement of Revenue and Expenditure present fairly the financial position of the Authority as at December 31, 1968 and the results of its operations for the year ended on that

date, in accordance with generally accepted accounting principles applied on a basis consistent with that of the preceding year.

Toronto,
May 29, 1969

John F. Connor, C.A.,
City Auditor.



THE PARKING AUTHORITY OF TORONTO

Statement of Revenue and Expenditure
for the year ended December 31, 1968

	<u>Revenue</u>	<u>Parking Area Expense</u>	<u>Gross Profit</u>
Parking Areas in Shopping districts and Parks	\$1,804,428	\$1,139,638	\$ 664,790
Garages	1,231,699	705,022	526,677
Parking Areas in other downtown locations	844,768	463,284	381,484
	<u>\$3,880,895</u>	<u>\$2,307,944</u>	<u>\$1,572,951</u>
 Sundry Revenue			189,593
			<u>\$1,762,544</u>
Less, Administration Expenses			366,355
Direct Operating Surplus			\$1,396,189
Appropriated for:			
Debt Charges:			
-Re principal and interest on debentures		\$ 145,933	
-Interest on advances pending the issue of debentures . .		<u>164,657</u>	310,590
			<u>\$1,085,599</u>

INCOME AND EXPENSES 1968

HOW THE
INCOME DOLLAR
WAS SPENT



SURPLUS
34.3%

56.7% OPERATING EXPENSE

9.0% ADMINISTRATION EXPENSE

HOW THE
OPERATING EXPENSE
DOLLAR WAS SPENT



41.9% TAXES

32.7% WAGES

7.9% RENT

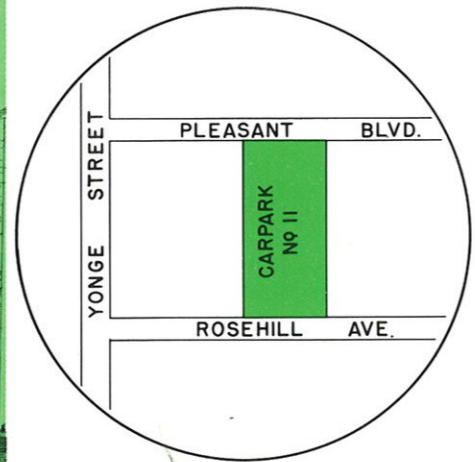
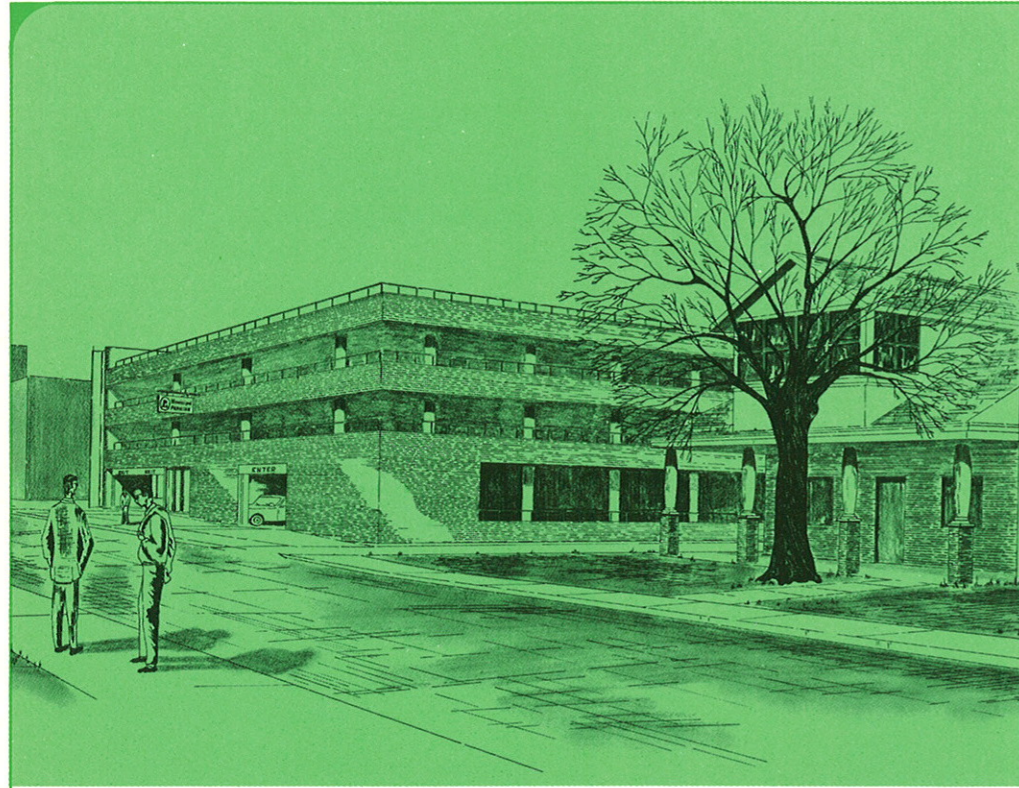
8.1% INSURANCE, TICKETS,
EQUIPMENT AND SUNDRY EXPENSE

5.0% MAINTENANCE

4.4% HEAT & LIGHT



CARPARK No. 11



This ramp garage, presently under construction, is situated over the open-cut section of the T.T.C. Yonge Street subway line between Pleasant Boulevard and Rosehill Avenue. When completed in June 1969, the garage will have 3½ levels with parking for 320 cars. The floor area will be approximately 106,000 square feet. Provision has been made in the design for future extension of the garage for 3 additional levels and the installation of future pedestrian elevators.

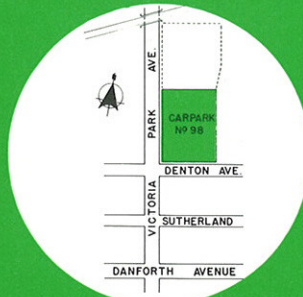
The building is of flat slab reinforced concrete construction with 8 feet floor to floor height. The main concrete columns are supported by steel girders that span the open-cut section of the subway. These, in turn, are supported on 15 to 30 feet deep concrete caissons built on the slopes of the embankment.

Throughout the construction, the T.T.C. is continuing its normal subway service. To prevent interruption to this service and maintain the safety requirements for T.T.C. passengers, the Contractor is working in close co-ordination with T.T.C. personnel. Because of this, it was necessary to carry out many of the key operations in the early morning hours between 2 a.m. and 5 a.m. when the subway trains were not running. Thirteen of the main steel girders weighing up to 28 tons each and varying in length from 70 feet to 98 feet were erected in these restricted hours. The first floor slab which was directly over the subway tracks was also formed and poured during the off hours. The Contractor is placing concrete by the pump concrete method whereby the concrete is pumped from the ready-mix trucks through steel tubes to the area in the building where it is required.

The floor slab at each entrance and exit will be heated by electric heating cables to prevent a freezing condition at entrances and exits. Control office, lunchroom, etc., will be electrically heated. A public address system will be installed to transmit music and voice in the entire car-park. Lighting and slab heating will be controlled from a control panel located in the office. The position of doors on fire hose cabinets and fire extinguisher cabinets will be electrically supervised from the office.

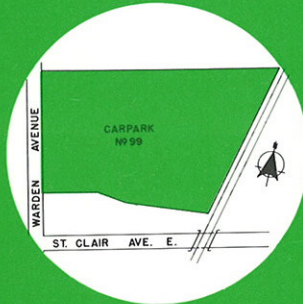


CARPARKS OPENED IN 1968



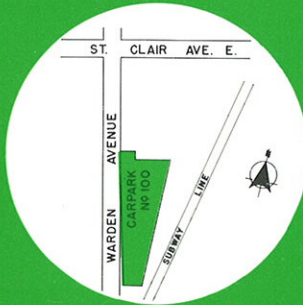
AREA #98

VICTORIA PARK AVENUE was opened May 10th, 1968. This carpark contains 260 spaces. It is situated at the Victoria Park Avenue east-west subway station. Its rates are structured to appeal to both long and short-term parkers using the Rapid Transit System. Seventy-eight of its spaces are located under the elevated bus loop of the subway station thereby providing sheltered parking.



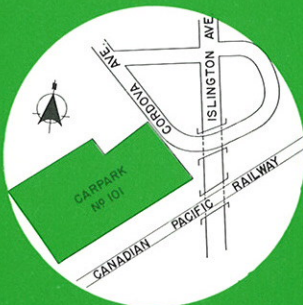
AREA #99

WARDEN AVENUE and ST. CLAIR AVENUE EAST. This parking area opened July 17th, 1968. It is located on the north-east corner, immediately north of the east terminal station of the east-west subway. It contains 1416 parking spaces; its rates cater to all-day parkers who may park and proceed to their destination on the Rapid Transit System.



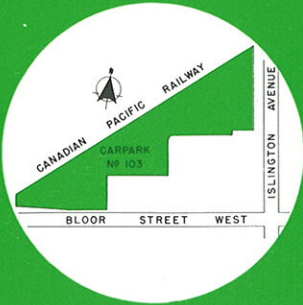
AREA #100

WARDEN AVENUE south of ST. CLAIR. This carpark was opened November 6th, 1968 and is on the east side of Warden Avenue at the east terminal station of the east-west subway. It contains 152 parking spaces and its rates appeal to short-term parkers using the Rapid Transit System.



AREA #101

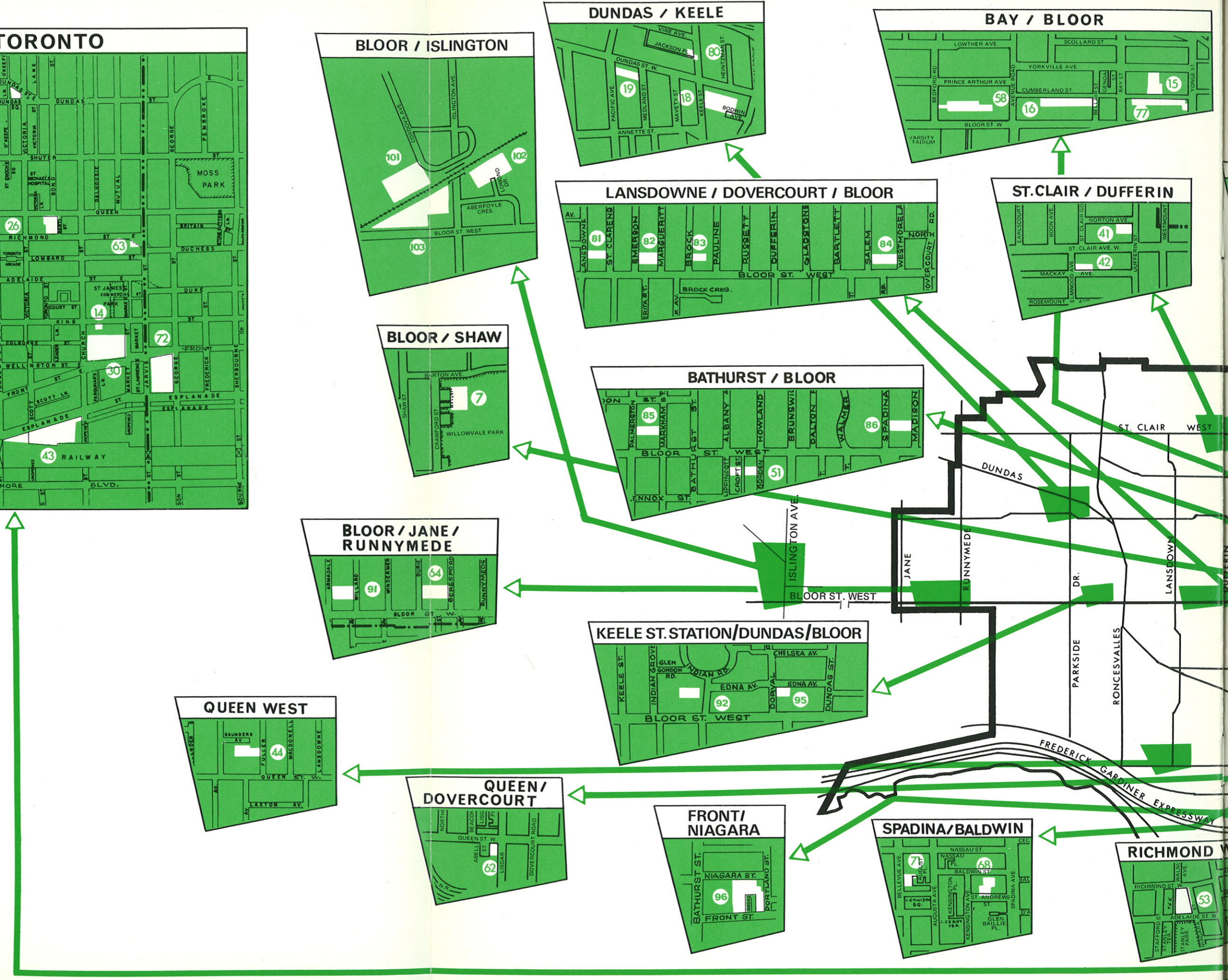
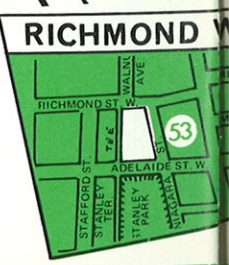
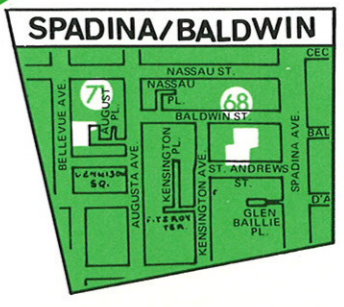
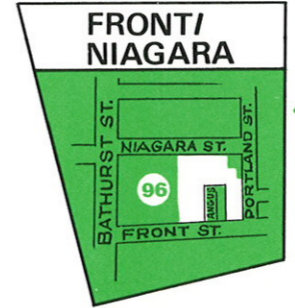
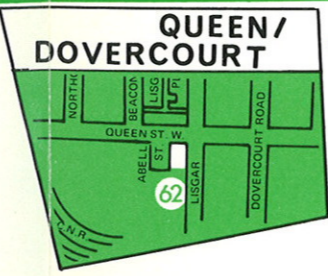
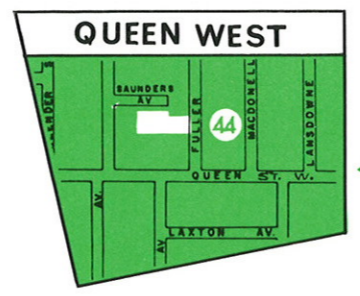
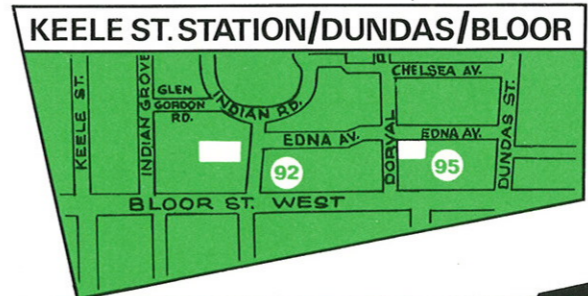
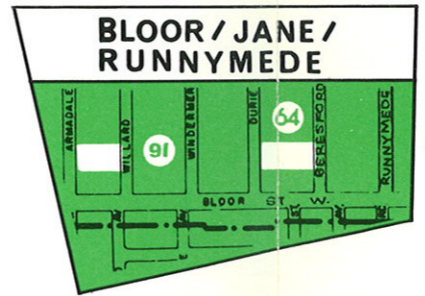
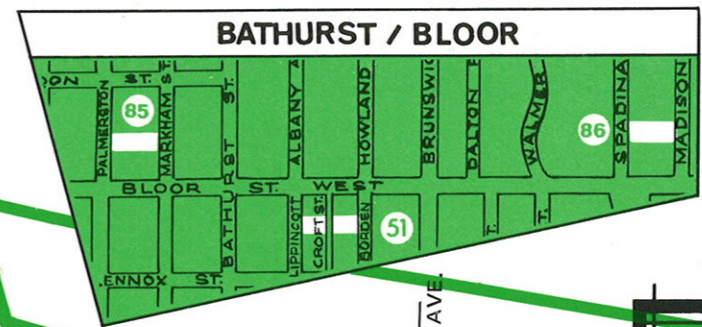
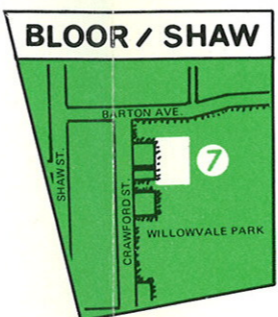
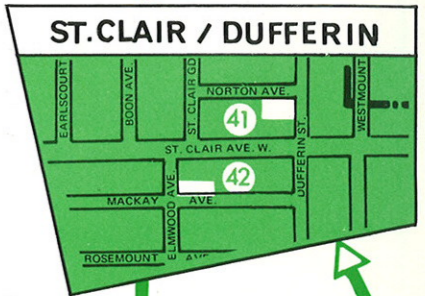
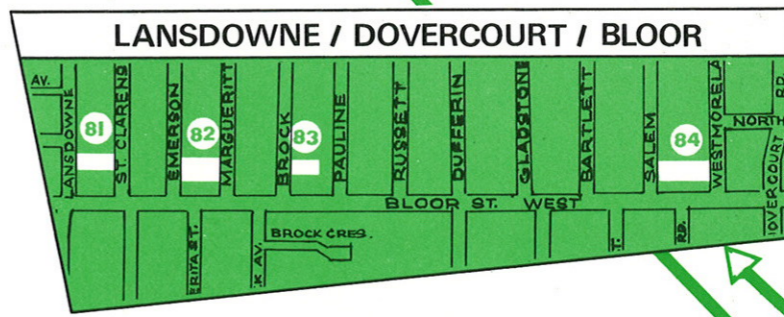
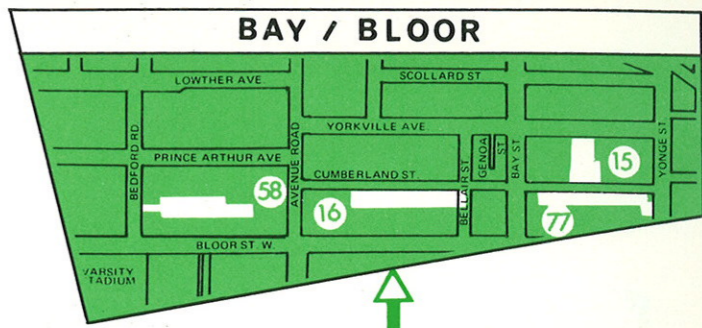
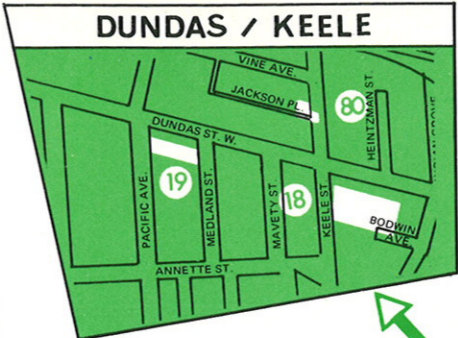
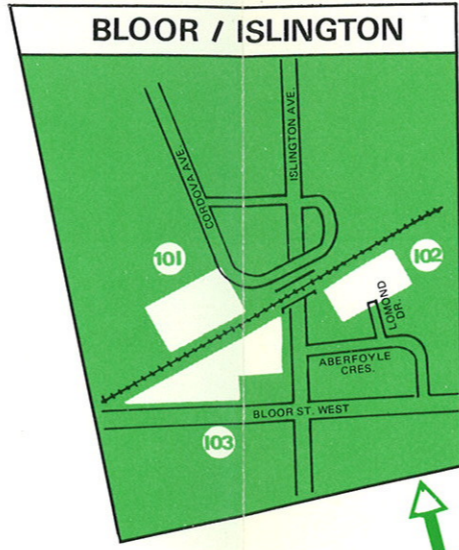
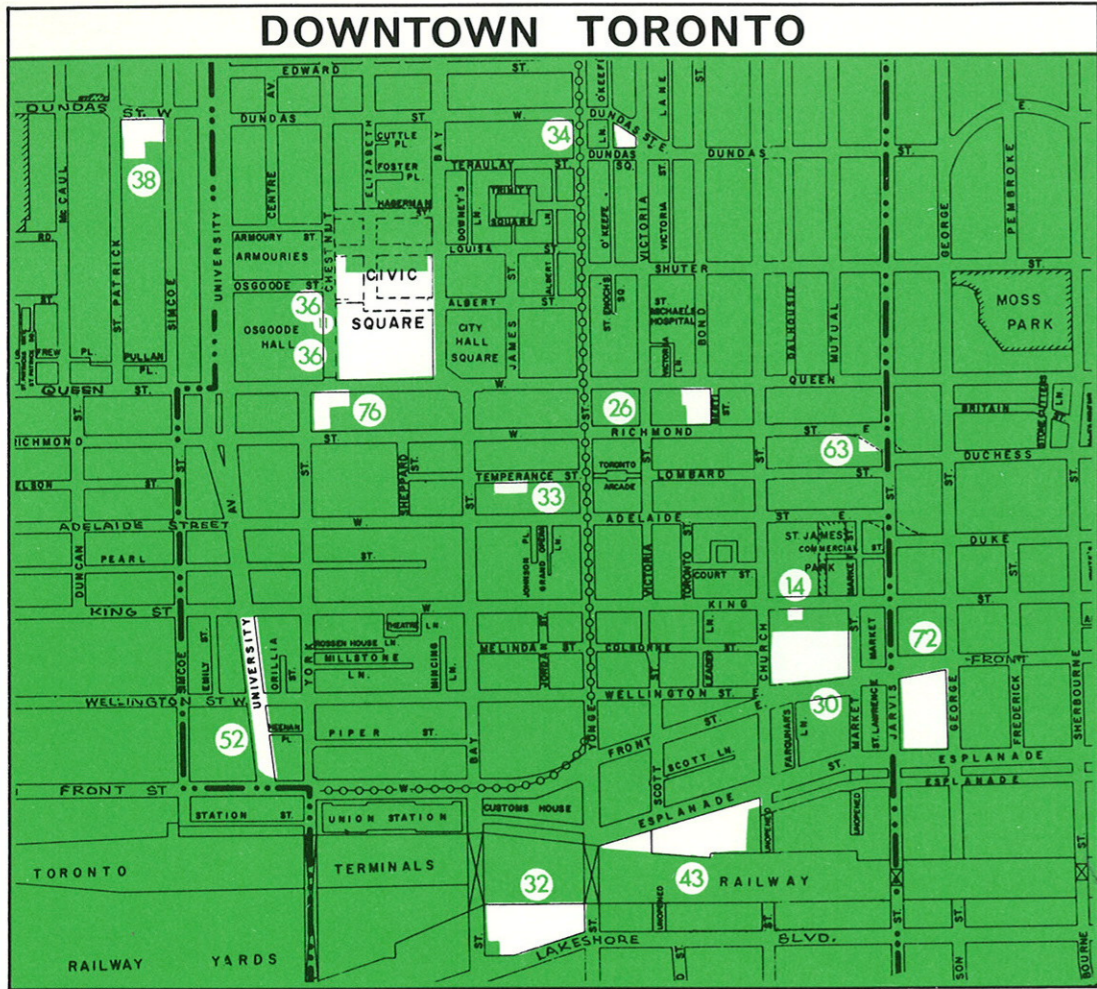
CORDOVA AVENUE west of ISLINGTON AVENUE. This carpark containing 438 parking spaces was opened September 26th, 1968. It is located on the south side of Cordova Avenue at the west terminal of the east-west subway. Its rates are structured to attract all-day parkers enabling them to inexpensively park and proceed to their destination on the Rapid Transit System.



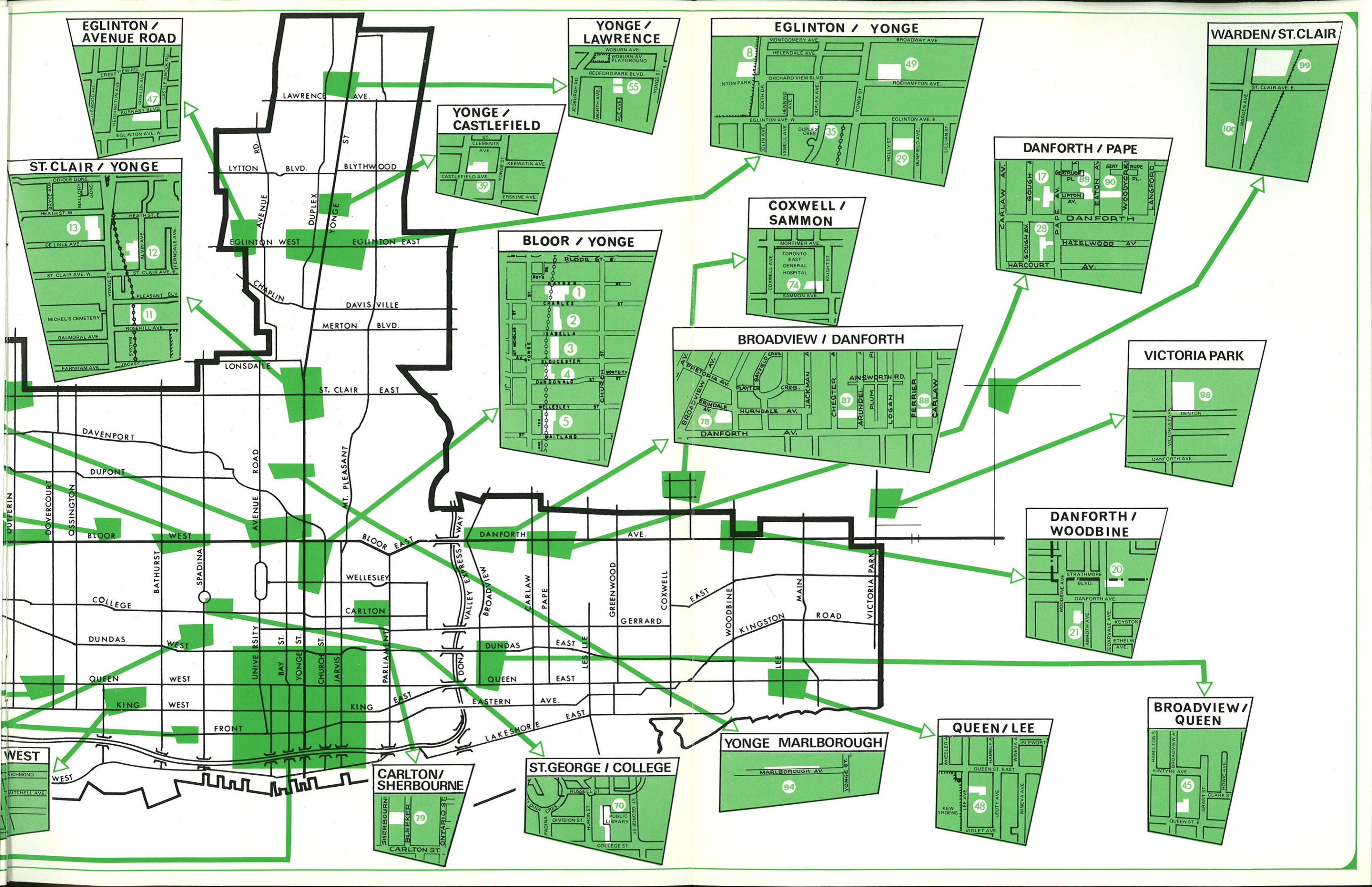
AREA #103

BLOOR STREET WEST. This carpark containing 582 spaces was opened August 15th, 1968. It is located on the north side of Bloor Street, west of Islington Avenue, at the west terminal of the east-west subway. There is an all-day flat rate charged at this area to encourage long-term parkers to use the Rapid Transit Subway.

DOWNTOWN TORONTO



P
CITY OF TORONTO
LOCATION OF MUNICIPAL CARPARKS & GARAGES



EGLINTON / AVENUE ROAD

YONGE / LAWRENCE

EGLINTON / YONGE

WARDEN / ST. CLAIR

ST. CLAIR / YONGE

YONGE / CASTLEFIELD

DANFORTH / PAPE

COXWELL / SAMMON

BLOOR / YONGE

BROADVIEW / DANFORTH

VICTORIA PARK

DANFORTH / WOODBINE

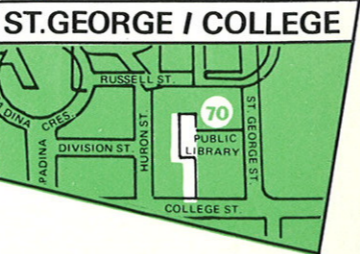
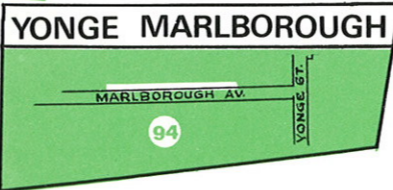
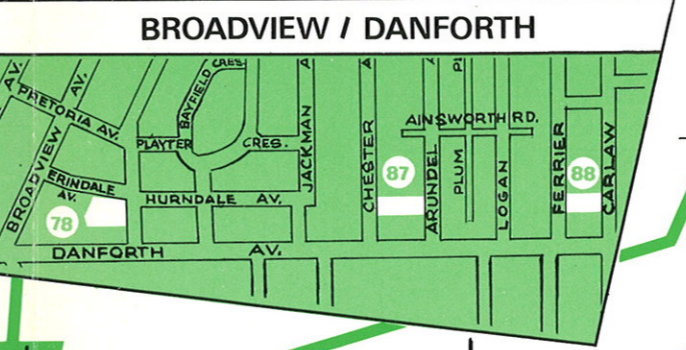
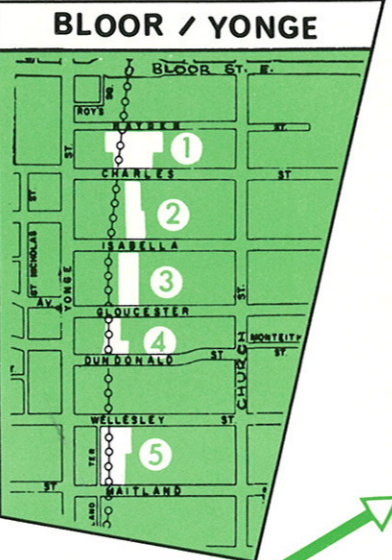
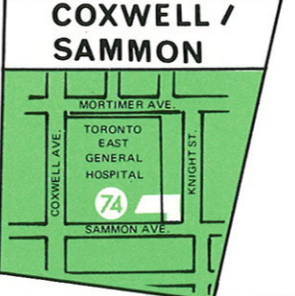
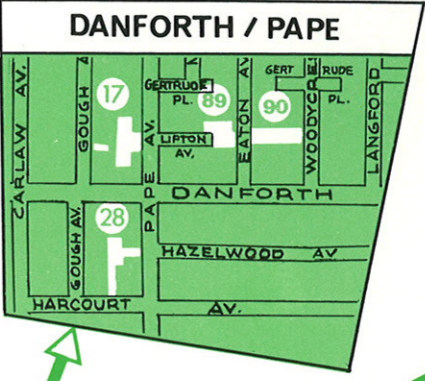
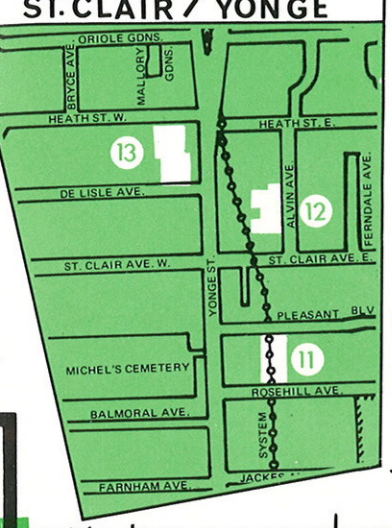
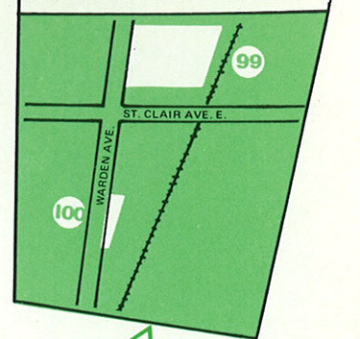
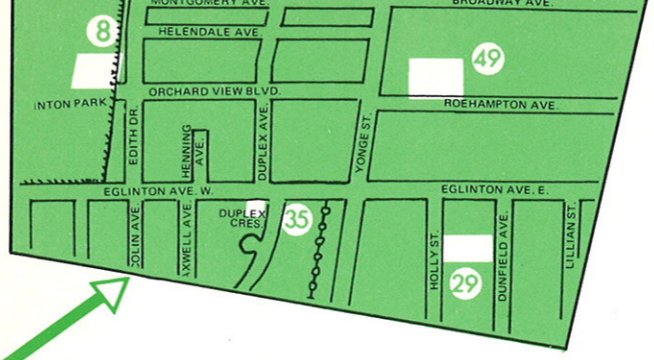
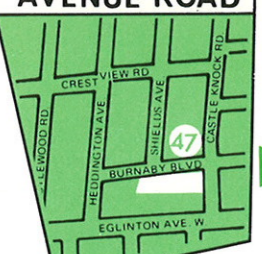
BROADVIEW / QUEEN

QUEEN / LEE

YONGE MARLBOROUGH

ST. GEORGE / COLLEGE

CARLTON / SHERBOURNE



THE PARKING AUTHORITY OF TORONTO
LOCATIONS OF MUNICIPAL OFF-STREET PARKING FACILITIES

Area	Location	Capacity
1	Hayden Street, east of Yonge	148
2	Charles, east of Yonge	86
3	Isabella Street, east of Yonge	123
4	Gloucester & Dundonald Streets, east of Yonge	55
5	Wellesley Street, east of Yonge	152
7	Willowvale Park	95
8	Eglinton Park	146
11	Pleasant Boulevard, east of Yonge (closed for construction)	
12	Alvin Avenue, east of Yonge	174
13	Heath & Delisle Avenue (Extension)	182
14	King & Church Streets	24
15	Cumberland-Yorkville	196
16	Cumberland, west of Bay	151
17	Pape Avenue, north of Danforth	97
18	Keele Street, south of Dundas Street West	78
19	Pacific Avenue, south of Dundas Street West	69
20	Cedarvale Avenue, north of Danforth	44
21	Amroth Avenue, south of Danforth	53
26	Queen-Victoria Garage	518
28	Harcourt Avenue	78
29	Holly & Dunfield	207
30	Church & Front Streets	462
32	Fleet & Bay Streets	486
33	Temperance Street	89
34	Dundas Square	57
35A	Duplex Avenue & Eglinton	93
36	Nathan Phillips Square Underground Garage	2324
38	St. Patrick & Dundas West	190
39	Castlefield, west of Yonge	180
41	Norton & Dufferin	68
42	Mackay & Elmwood	70
43	Esplanade, east of Yonge	585
44	Fuller Avenue, north of Queen Street West	131
45	Broadview, north of Queen Street East	100
47	Burnaby Blvd. & Castle Knock	179
48	Lee Avenue, south of Queen Street East	76
49	Roehampton, east of Yonge	138

Area	Location	Capacity
51	Lippincott & Borden	147
52	University Avenue Underground Garage	323
53	Stanley Park	199
55	Bedford Park Avenue	45
58	Bedford Road	147
62	Abell Avenue, north of Queen Street West	27
63	Richmond Street, East & Jarvis	17
64	Beresford & Durie	117
68	Kensington Market, Baldwin	85
70	Central Library, St. George & College	95
71	Kensington Market, Bellevue	99
72	Front & George Streets	450
74	East General Hospital	210
76	Queen Street West & York	91
77	S/S of Cumberland, between Yonge & Bay	180
78	North of Danforth, Erindale & Ellerbeck	76
79	E/S of Sherbourne, north of Carlton	108
80	W/S of Keele St., north of Dundas St. West	58
81	Lansdowne & St. Clarens	23
82	Margueretta & Emerson	54
83	Margueretta & Brock	15
84	Salem to Westmoreland	34
85	Palmerston & Markham	34
86	Spadina to Madison	59
87	Chester & Arundel	63
88	Carlaw & Ferrier	52
89	W/S of Eaton	66
90	Eaton & Woodycrest	76
91	Willard & Armadale	136
92	W/S of Indian Road, north of Bloor Street West (Keele Subway Station)	253
94	N/S of Marlborough, west of Yonge	24
95	Edna & Dorval, north of Bloor St. W.	76
96	W/S of Portland, north of Front	249
98	E/S of Victoria Park (Subway Station)	260
99	N/E Cor. of Warden Ave. & St. Clair Ave. East	1416
100	E/S of Warden Ave., south of St. Clair Ave. East	152
101	Cordova Ave., West of Islington Ave.	438
102	Lomond Dr., north of Aberfoyle Cres.	284
103	N/S of Bloor St., West of Islington Ave.	582



THE PARKING AUTHORITY OF TORONTO, 36 ADELAIDE STREET W., TORONTO, ONTARIO